

Name: ANSWERS Date: _____ Class: _____

1. A hot air balloon starts from the ground and floats 25ft. off the ground. It then increases another 65 ft. What is the balloon's final height?

$$25 + 65 = 90\text{ft}$$

2. Determine the absolute value of each:

$$|-2| = \underline{2} \quad |23| = \underline{23} \quad |-100| = \underline{100}$$

3. Find the opposite of each:

$$-12 \underline{12} \quad 34 \underline{-34} \quad -100 \underline{100}$$

4. Order the numbers from least to greatest: -22, 11, 1, -11, 21, -31

$$\underline{-31}, \underline{-22}, \underline{-11}, \underline{1}, \underline{11}, \underline{21}$$

5. Rewrite these numbers in order from smallest to largest.

$$\underline{-42}, \underline{|5|}, \underline{|-32|}, \underline{0}, \underline{-42}, \underline{3}, \underline{3}, \underline{|5|}, \underline{|-32|}$$

6. Circle the number with the **GREATER** value:

-21 or -22

5 or -8

-110 or 0

7. The sum of a number and its opposite will equal zero (rhymes with hero)

Unit 1 Test STUDY GUIDE – Part 1: Operations with Integers

SOLVE. SHOW ALL WORK.

8. $-350 + 172 = \underline{-178}$

9. $-245 + (-333) = \underline{-578}$

10. $45 \div 5 = \underline{9}$

11. $-4 \times (-7) = \underline{28}$

12. $2 + (-6) + (-12) = \underline{-16}$

13. $-10 - (-3) \times 5 = \underline{5}$

14. The list below gives monthly average low temperatures (in ° Fahrenheit) for Seneca Falls, NY from November to March.

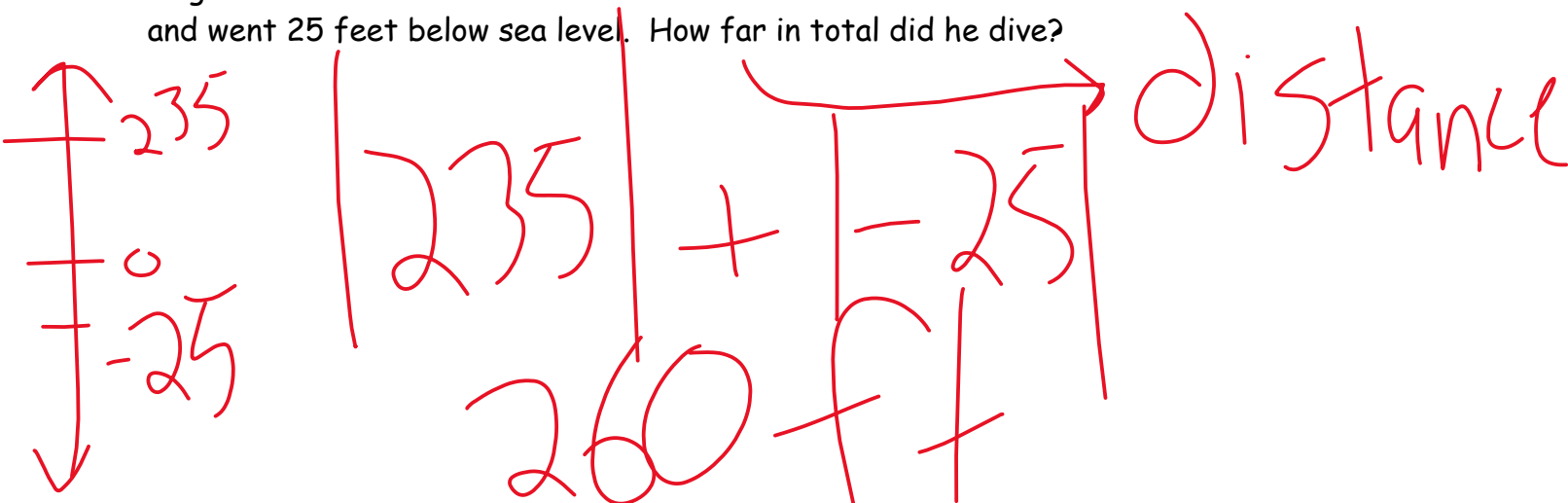
51°F, 15°F, 0°F, -6°F, -13°F, 32°F, 11°F

a. What is the lowest of these monthly low temperatures? -13

b. What is the difference between the highest and lowest temperature?

64
 $51 - (-13)$

15. Jorge dove off a cliff. The cliff was 235 feet above sea level. He dove into the water and went 25 feet below sea level. How far in total did he dive?



Unit 1 Test STUDY GUIDE – Part 1: Operations with Integers

16. Jeff started out with \$350 in his bank account. He spent \$45 to buy a sweatshirt for the ballgame. He earned \$25 walking dogs and \$34 mowing lawns. How much money is now in his account?

$$\$364$$

17. Once a parachute is deployed, a skydiver **descends** at a rate of about 5 meters per second. Where will the skydiver be in relation to where the parachute deployed after 4 seconds?

$$-5 \text{ m} \times 4 \text{ s}$$

The skydiver will be 20 meters **BELOW** where the parachute was deployed.

$$-5(4) = -20 \text{ m}$$